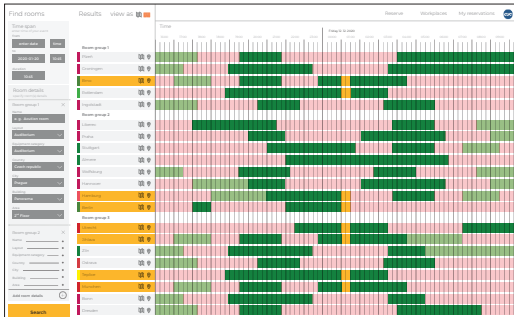


What's new in touchONE reservation system



Planned for platforms



Browser



Outlook



MS Teams



iOS



Android

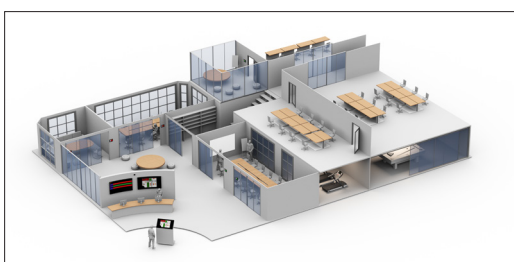
Meeting room & workplace reservation tool

- » Communication with Office 365 calendar and Azure AD
- » Sign in to Microsoft Office365 account using Microsoft Identity Platform
- » User dashboard
- » Overview of user reservations
- » Basic time filters for meeting rooms & workplace availability
- » Filters for location, area, room capacity, equipment, layout, etc.
- » Time-line for intuitive room & workplace status overview
- » Simple room & workplace reservation
- » Multi-room reservation in various locations
- » Cancel reservations
- » Room details incl. description, room layout, room picture, etc.
- » Floor plans with room & workplace positions and status indication



4.2" workplace reservation interface

- » Intuitive user interface for workplace reservation
- » Color LCD display, size 4.2" diagonal
- » LED indicator for workplace state indication
- » Integrated NFC reader
- » One-cable Ethernet connection + power
- » PoE, IEEE 802.3af / Class 0
- » Slim elegant design
- » Plastic black enclosure, edge-to-edge front glass
- » Installation options
 - » Tabletop
 - » Desk divider
 - » On-wall
- » Mounting accessories included



New features

- » Microsoft Graph API with modern authentication for Office 365
- » Unique calendars' sync technology permits to use shared meeting rooms between several organizations, e.g. in office centres
- » New administration tool touchONE-admin incl. Active Directory and NFC card enrolment support
- » Support for simple digital signage functionality
- » Important security updates
- » Possibility to create server communication log files
- » Possible to cancel meeting automatically if the room is abandoned

What's new in control system



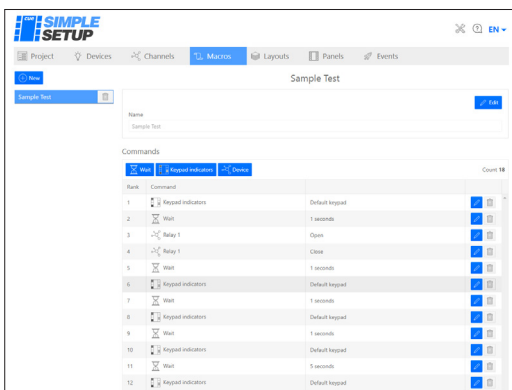
4.2" touch-screen keypad

- » Serves as Cue System button control panel
- » Button layout generated on the screen
- » Color LCD display, size 4.2" diagonal
- » Integrated NFC reader
- » One-cable Ethernet connection + power
- » PoE, IEEE 802.3af / Class 0
- » Slim elegant design
- » Plastic black enclosure, edge-to-edge front glass
- » Installation options
 - » Tabletop
 - » On-wall
- » Mounting accessories included



Control system with touch-screen keypad

- » Cost-effective control solution for any meeting room
- » 4.2" touch-screen keypad for intuitive user interface
- » Control panel installation options
 - » Tabletop
 - » On-wall
- » Friendly configuration using built-in web site
- » Powerful support for IP device control
- » Bi-directional serial port
- » Universal ports - serial or IR output, digital I/O
- » Dedicated port for room occupancy sensor
- » Low voltage relays
- » PoE, IEEE 802.3af / Class 0



Web-based Simple Setup for liteCUE

- » Configuration based on built-in web site
- » No proprietary configuration software required
- » Various IP, serial and IR device drivers available
- » Device driver library available on-line from cloud
- » Support for up to 5 button keypads
- » Automatic creation of keypad label to PDF file
- » Integration with touchONE reservation system
- » Current user interface in English, French and Czech, other languages on demand